

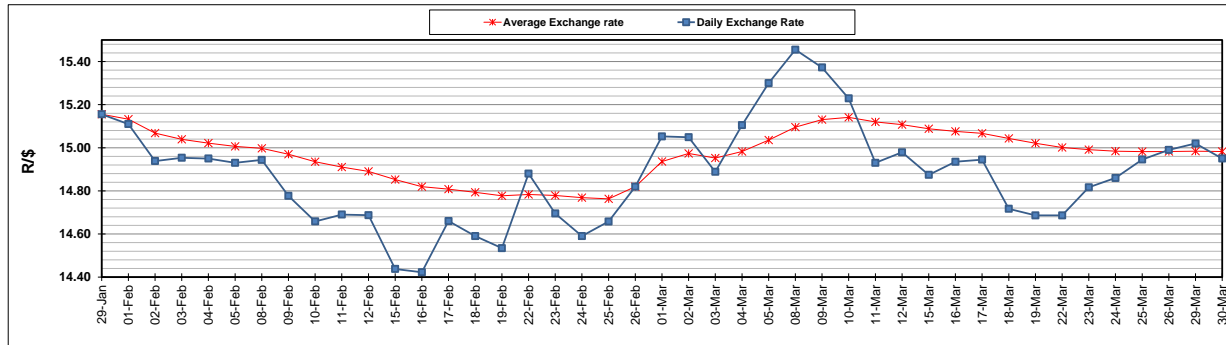
	PETROL 95 ULP	PETROL 93 ULP & LRP	DIESEL 0.05%	DIESEL 0.005%	ILL. PAR.
GAUTENG PUMP PRICE (SA c/l) AS FROM 03/03/2021	1,632.000	1,615.000	-	-	-
WHOLESALE PRICE (SA c/l) AS FROM 03/03/2021	-	-	1,412.420	1,416.820	845.688
SINGLE NATIONAL MAXIMUM RETAIL PRICE	-	-	-	-	1,071.000
BASIC FUEL PRICE - 30/03/2021 (SA c/l)	729.143	714.495	654.875	657.166	637.429
PRESS RELEASE CONTRIBUTION TO BFP 03/03/2021 - 30/03/2021 (SA c/l)	665.170	658.170	653.630	658.030	633.128
UNIT OVER/(UNDER) RECOVERY - 30/03/2021 (SA c/l)	(63.973)	(56.325)	(1.245)	0.864	(4.301)
AVERAGE BASIC FUEL PRICE 26/02/2021 - 30/03/2021	729.114	717.189	683.836	686.526	661.977
AVERAGE UNIT OVER/(UNDER) RECOVERY 26/02/2021 - 30/03/2021	(72.422)	(67.497)	(37.249)	(35.800)	(34.981)

### ANALYSIS MOVEMENT OF AVERAGE OVER/(UNDER) RECOVERY

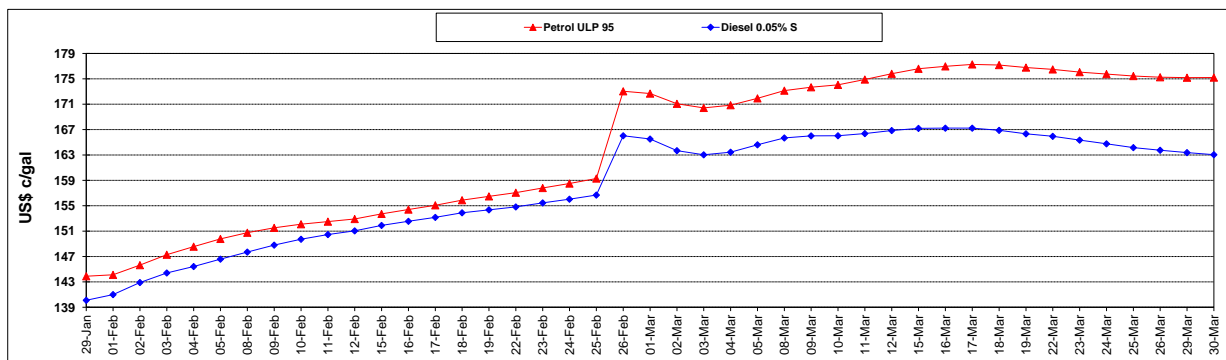
	PETROL 95	PETROL 93	DIESEL 0.05%	DIESEL 0.005%	ILL. PAR.
- MOVEMENT IN INTERNATIONAL PRODUCT PRICES	(61.726)	(56.976)	(27.217)	(25.729)	(25.268)
- MOVEMENT IN EXCHANGE RATE	(10.696)	(10.521)	(10.032)	(10.071)	(9.711)
AVERAGE UNIT OVER/(UNDER) RECOVERY 26/02/2021 - 30/03/2021	(72.422)	(67.497)	(37.249)	(35.800)	(34.979)

### R/\$ EXCHANGE RATE - (R/\$14.9500 - 30/03/2021)

#### EXCHANGE RATE USED IN BASIC FUEL PRICE



#### INTERNATIONAL PRODUCT PRICES OF BASKET USED IN BASIC FUEL PRICE



#### BASIC FUEL PRICE IN SA CENTS PER LITRE

